

Great Value, Local Entertainment

# Compass Theatre and Manor Farm

Sept – Dec 12



Winston Churchill Theatre and Hall  
now refurbished! See page 19  
for hiring



HILLINGDON  
LONDON

Box Office 01895 673200  
[www.compasstheatre.co.uk](http://www.compasstheatre.co.uk)

## There's more than just shows at Compass Theatre...

### Compass Club

A great way to support your community theatre and save money.

- Discounts on tickets
- Free booking\* and postage
- Discounts at local restaurants

\*excluding online

Hillingdon First card holders £15, without Hillingdon First card £25

### Compass Seats

Support our seat renovation programme as a gift or in memory with a 5 year dedicated seat plaque and 5 years of Compass Club membership – all for £120.

### Compass Costumes

Wardrobe department with over 3000 costumes for hire every term time Weds 8pm-10pm. 01895 237256 [jilly.lloyd@btinternet.com](mailto:jilly.lloyd@btinternet.com)



### Coffee Mornings

Alternate Wednesdays at Compass and alternate Fridays at Manor Farm. Admission is free and a list of speakers can be found online.

### Compass Kidz

Twice monthly drama classes for 4 to 7 year olds. Places £5



### 360 Youth Theatre

Drama, film and photography: ages 13-19  
01895 465572  
[360@hillingdongrid.net](mailto:360@hillingdongrid.net)

### Animation / Cinematography

Sunday workshops: ages 12+  
07946148714  
[kmasters3@hillingdongrid.org](mailto:kmasters3@hillingdongrid.org)

### Dance Challenge

Providing national dance competitions  
0845 5390014  
[dance@dancechallenge.co.uk](mailto:dance@dancechallenge.co.uk)  
[www.dancechallenge.co.uk](http://www.dancechallenge.co.uk)

### Stars at Knight

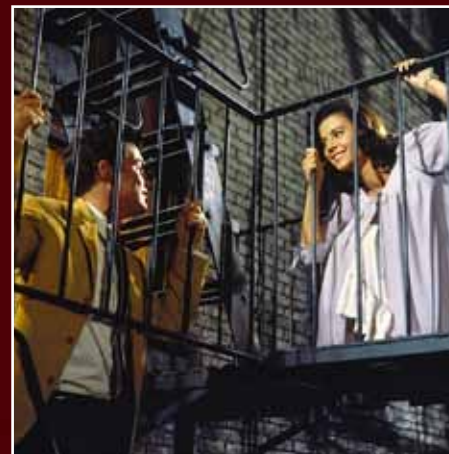
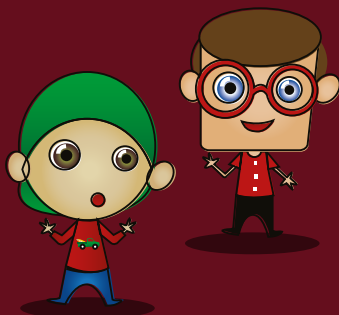
Weekly drama: ages 7-14  
0208 8418940 / 0795 6123626  
[starsatknight@btinternet.com](mailto:starsatknight@btinternet.com)  
[www.starsatknight-schoolofdrama.co.uk](http://www.starsatknight-schoolofdrama.co.uk)

### Talking Pictures (UK) Ltd

Promotional, dramatised and music video productions  
0845 6031474  
[info@talkingpicturesltd.com](mailto:info@talkingpicturesltd.com)  
[www.talkingpicturesltd.com](http://www.talkingpicturesltd.com)

### Workers' Educational Association (WEA)

A range of part-time day courses for adults  
01895 230948  
[www.wea.org.uk](http://www.wea.org.uk)



Tue 11 September 2pm

## West Side Story

1961 iconic, ground-breaking, award-winning film, and over fifty years on, still one of the best film adaptations of a musical – ever.

Tue 9 October 2pm

## The Railway Children

1970 British family drama adventure film, based on the novel by E. Nesbit, starring Bernard Cribbins and a young Jenny Agutter.



Mon 29 October 11am

## The Princess Bride

1987 classic family film directed by Rob Reiner that combines great comedy, adventure, romance and fantasy.

Tue 13 November 2pm

## North by Northwest

1959 classic thriller and ground-breaking film directed by Alfred Hitchcock, starring Cary Grant, Eva Marie Saint and James Mason.







Sun 2 September 12-4pm  
Hillingdon Arts Service presents

## Big Fest 2012

This year BigFest will feature some of the most exciting street acts in Europe, brought to Hillingdon as part the GLA's Olympic touring festival - *Showtime*.

As always, the event will transform Uxbridge High Street into a wonderland of the unexpected - with a host of street theatre shows, walk-about acts, stalls, food, a dance arena and workshops.

The main stage will be headlined by BBC's *The Voice* finalist **Joelle Moses** along with top local jazz act *Pimp My Jazz*, winners of Hillingdon's Hidden Talent 2012 *Indigo High* and the UK's favourite brass band *Brassroots*.

**FREE ENTRY**



Fri 7 September 1.30pm  
Sat 8 September 11am  
Big Wooden Horse presents

## Stuck

By Oliver Jeffers

It all began when Floyd got his kite stuck in a tree...

He throws up his shoe to shift it, but that gets stuck too. So he throws up his other shoe and that also gets stuck - along with the cat, a ladder, a pot of paint, the kitchen sink, an orang-utan and a whale - amongst other things!

Will Floyd ever get his kite back?

Following their critically acclaimed stage adaptation of Oliver Jeffers' *The Way Back Home* we are proud to welcome back Big Wooden Horse with their new show, another adaptation of an Oliver Jeffers children's story.

Tickets £7 / £6 Compass Club



Thu 13 September 7.30pm  
Hillingdon Arts Service presents

## The Hotel

The Glebe Hotel, Ickenham 2012: one ordinary hotel room, two identical beds, one lamp, one telephone, a rug, a chair and a desk - a blank canvas of a room and the kind we've all seen and slept in. Or not slept in.

What stories might unfold here?

Following the success of last year's *A Night at the Races* and 2010's *For Better or For Worse*, **The Hotel** is a compilation of winning short plays from our recent new writing competition. It invites you on a journey, as our writers explore what might happen in this one room over the course of a week.

Expect to be challenged, surprised and moved but above all - expect the unexpected.

Tickets £6



Sat 15 September 8pm  
Murder Most Fun presents

## Movie Mania

A film is to be made of Ickenham Hall. Monstrous Movies has been contracted to make it, but the sponsor Max Mozzarella - owner of the Pies, Pizzas and Pasta Parlours chain - has secret ambitions to be a movie mogul. But what does Max know about movies? Has Has Dolly Byrd actually got a brain? Is Filthy Fred a real detective? Who on earth is Delores de Lamour? And why is Ingrid Berger in a cupboard?

If you think you can solve these and other mysteries (without being escorted from the 'studios' under armed guard), why not come along with or without a team and try your hand at being a detective.

**Tickets £10**

Proceeds go towards the fund for the restoration of Ickenham Hall



Wednesdays 19 Sep – 31 Oct 7pm – 10pm

## Theatre Design Course

A course for local theatre practitioners to explore the multi faceted art of set building.

Led by a professional set designer, this course will explore the principles of set design and creatively explore the possibilities of theatre space, offering opportunities to think outside the box, learn tricks of the trade and push the boundaries of design.

Places £70



Thu 20 – Sat 22 September 7.30pm

Sat 22 September 2.30pm

Pastiche Musical Theatre present

## Musical Meanderings

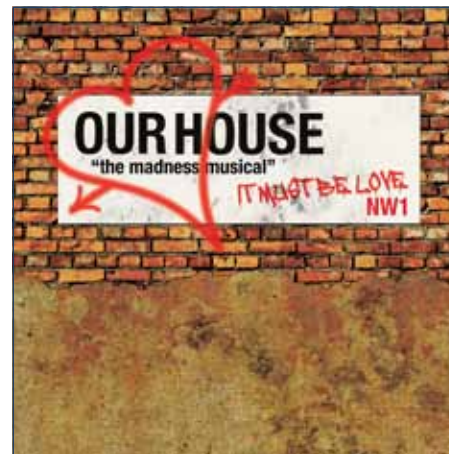
A collection of music and song meandering through the West End, Broadway and Hollywood, in Pastiche Musical Theatre's annual charity fund-raising summer show.

There will be something for everyone. Big set piece numbers from your favourite musicals to solos, duets, dance numbers and novelties.

Sit back, be entertained and in the process help raise money for local charity, The June Hancock Mesothelioma Research Fund.

Pastiche Musical Theatre have now raised over £50,000 for good causes and charities since 1997 so come along and help them to help those in need.

Tickets £10



Wed 26 – Sat 29 September 7.30m

Sat 29 September 2.30pm

Hillingdon Musical Society presents

## Our House

Our House is the award winning musical based on the wonderfully witty and contagious songs of **Madness**. The show tells the story of Joe Casey and the differing ways his life could turn out after a brush with the police on his 16th birthday. We follow the exploits of good Joe as he gets caught and pays the consequences while bad Joe gets away and finds life easy when you play fast and loose with the law and what happens when good turns bad and bad turns good. played against the backdrop of Camden in the 90s Our House is a show full of triumph and tears set out to the Madness sound of the 80s. Featuring numbers including *Baggy Trousers*, *Driving in My Car*, *Wings of a Dove* and of course *Our House* it is a night with the Nutty Boys you will not want to miss.

Tickets £13 / £11 concessions



## Esprit De Corps

at Winston Churchill Hall

A concert series featuring the finest military bands of the British Armed Forces. All proceeds donated to the Household Cavalry Central Charitable Fund, the Royal Navy and Royal Marines Charity and the Royal Air Forces Association.

Thu 4 October 7.30pm

The Band of the Blues and Royals

Thu 22 November 7.30pm

The Band of HM Royal Marines,  
Portsmouth (Royal Band)

Thu 13 December 7.30pm

The Central Band of the Royal Air Force

Tickets £15

Book 2 concerts for £27

Book 3 concerts for £36

(packages not available on-line)



# Calendar Girls

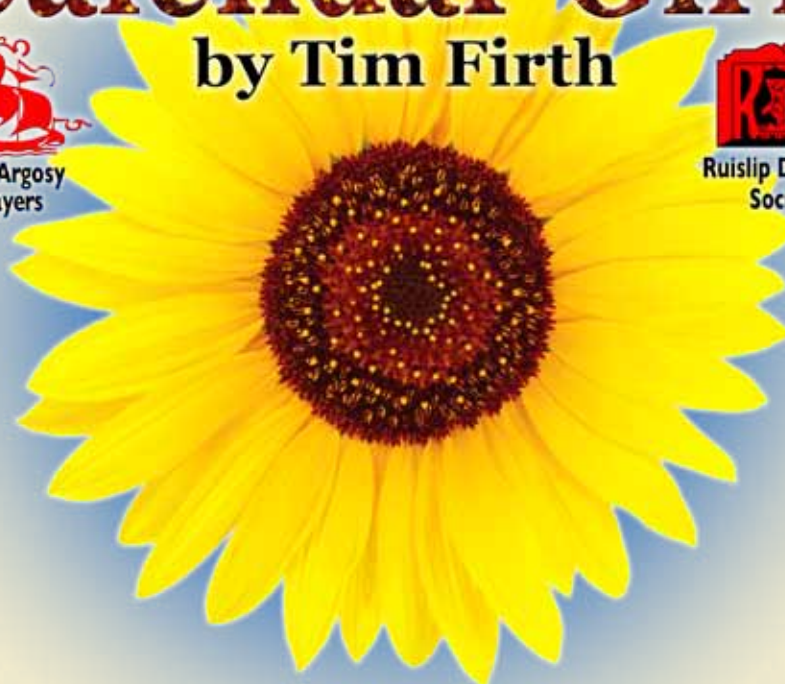
by Tim Firth



The Argosy  
Players



Ruislip Dramatic  
Society



## 2 weeks, 2 different productions, 1 very special show

Two of Hillingdon's theatre companies tell the incredible true story of the extraordinary ladies of the Women's Institute who find themselves revealing more than they ever planned in their fight against cancer. *Calendar Girls* is based on an uplifting true story that is both hilarious and poignant. Join Argosy Players and Ruislip Dramatic Society as they unite in raising money for this worthy cause.

Argosy Players  
3-6 October 7.45pm  
Sat 6 Oct 2.30pm  
Tickets £12  
£11 concs Wed/Thu  
and matinee only  
from Compass Box Office  
or Argosy 0845 8389058  
[www.argosyplayers.org.uk](http://www.argosyplayers.org.uk)

Ruislip Dramatic Society  
10-13 October 7.45pm  
Sat 13 Oct 2.30pm  
Tickets £12  
£11 concs Wed/Thu  
and matinee only  
from Compass Box Office  
or RDS 01895 675343  
[www.ruislipdramatic.org](http://www.ruislipdramatic.org)



Sun 14 October 7pm

Friends of Ickenham Hall presents

## Quiz 'n' Chips

Come and take part in a light-hearted, general knowledge quiz. You can enter a team or join other individuals to make up a team. Included in the ticket price is a tasty chip supper; choose from:

Fish and chips  
Chicken and chips  
Vege-Burger and chips  
Sausage and chips

...and the bar will be open throughout to help lubricate the brain and all your vital quiz muscles.

### Tickets £10

Profits from this event will benefit The Friends of Ickenham Hall, who raise funds to restore both Ickenham Hall and the Compass building and fittings  
[www.ickenhamhall.org.uk](http://www.ickenhamhall.org.uk)



Wed 17 – Sat 20 October 7.30pm

Sat 20 October 2.30pm

KLOS Musical Theatre presents

## Fiddler on the Roof

at Winston Churchill Hall

Based on Sholem Aleichem stories by special permission of Arnold Perl.

Tevye is a milkman living in Anatevka, a Jewish village in Czarist Russia, in 1905. He finds it difficult to come to terms with change and is unhappy that his daughters will no longer wait and see who the matchmaker will choose for them – they want to make their own decisions. There is sadness and heartache but also humour and optimism that life will get better, set against a background of political unrest.

The show features many wonderful songs, including *If I Were a Rich Man* and *Sunrise Sunset*.

**Tickets £13 / Concs £9 Wed £11 Thu, Sat**  
Only from 020 8868 4096

[www.klosmusicaltheatre.co.uk](http://www.klosmusicaltheatre.co.uk)  
Presented by arrangement with Josef Weinberger Ltd on behalf of Music Theatre International of New York. Book by Joseph Stein Music by Jerry Bock Lyrics by Sheldon Harnick



Wed 24 – Sat 27 October 8pm  
Purple Theatre presents

## Comic Potential

By Alan Ayckbourn

An hilarious and heartbreaking play, set in the foreseeable future when everything has changed except human nature; a future where TV daytime soaps are performed by android actors emotionally programmed by the control room.

When one, JC 31333, somehow develops her own sense of humour, she finds herself humanized as Jacie Triplethree and comes to the attention of Adam, a young scriptwriter who sees that possibly both humour and love are not the emotions that separate androids and humans so completely.

Tickets £13 / £11 concessions



Wed 31 Oct – Sat 3 Nov 7.45pm  
Proscenium presents

## Anna Christie

By Eugene O'Neill

An intense drama about the conflict between Kris Christopherson, a barge captain, his daughter Anna, her lover Mat and another character whose influence is felt throughout the play - that old devil sea.

Famously filmed in 1930, starring Greta Garbo in her first speaking role, the story is set against the background of water-front bars and dingy coastal ports - sharing its atmosphere with another O'Neill's masterpiece, *The Iceman Cometh*.

If you have never seen the play you are in for a great theatrical experience. If you have, you now have a second chance.

Tickets £12



Sat 27 October 12pm  
Derek Grant presents

## Treasure Island

Set sail for fun and adventure in this wonderful show for all the family starring Jassa from Disney's Art Attack, with plenty of comedy and music and colourful costumes and a strong storyline, from the producers that brought us The Ugly Ducking.

Tickets £7.50 / £6.50 Compass Club

Tue 29 October 11am

## The Princess Bride



A classic, comedy fairy tale film, with swordplay, giants, an evil prince and a beautiful princess.

Tickets £5 / £3 Compass Club



Thu 1 November 10.30am / 1pm

## Pirates and Princesses

Pirate and Princess themed workshops for 5 to 11 year olds. Choose from either the Song & Dance Workshop or the Craft Workshop - or come to both! Both workshops run at 10.30am and again at 1pm.

Places £5 per child, per workshop

Sat 3 November 11am / 1pm  
Theatre of Widdershins presents

## Rapunzel

*And the Tower of Doom*

See this traditional tale right back to its roots, teasing out tangles and styled beautifully. This enchanting show promises plenty of body, volume and loads of highlights. Make an appointment to see the show - because you're worth it. Recommended ages 4+

Tickets £7.50 / £6.50 Compass Club





Wed 7 – Sat 10 November 7.30pm  
 Sat 10 November 2.30pm  
 Players 2 presents

## Whistle Down the Wind

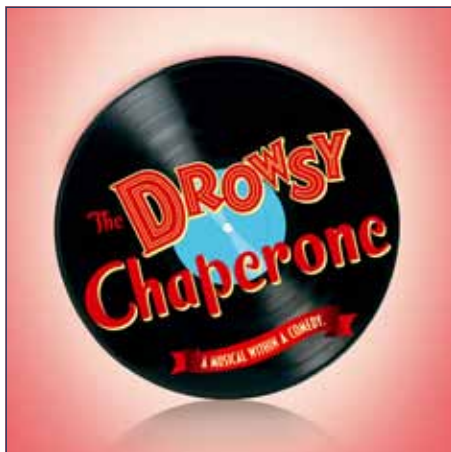
*Andrew Lloyd Webber's classic musical*

Based on the 1960s film starring Hayley Mills, but relocated to fifties America. A 15 year old girl in the Deep South discovers a mysterious man hiding out in a barn. When she asks his identity the first words he utters are "Jesus Christ". It's as if all her prayers have been answered. While the townspeople are determined to catch the fugitive, their children protect him from the world outside.

Andrew Lloyd Webber's score and lyrics by Jim Steinman include the beautiful love song No Matter What, which reached number one in the UK charts.

More information [www.players2.co.uk](http://www.players2.co.uk)

Tickets £13 / £11 concs



Wed 14 – Sat 17 November 7.30pm  
 Sat 17 November 2.30pm  
 Spotlight Musical Theatre Company presents

## The Drowsy Chaperone

*by Lisa Lambert, Don McKellar, Bob Martin and Greg Morrison.*

The Drowsy Chaperone took Broadway by storm in 2006, before transferring to the West End in 2007. Audiences were charmed by the toe tapping tunes and beautiful harmonies that make up this affectionate tribute to musical theatre. It is a show full of laughter, dancing and above all, fun.

Spotlight are delighted to be returning to the Compass after the success of Anything Goes in 2011. Join them as they transport you to the magical world of 1920s musical comedy.

Book via Compass Box Office or from Spotlight on 01895 430031 / 07795171117  
[www.spotlightmtc.weebly.com](http://www.spotlightmtc.weebly.com)

Tickets £12.50 / £11 concs Wed, Thu & Sat mat only



Wed 21 – Sat 24 November 7.30pm  
 Sat 24 – Sun 25 November 3pm  
 Harrow Opera presents

## The Magic Flute

A production, fully-staged with orchestra, of Mozart's magical fairy-tale opera which has some of his most sublime and beautiful music.

Prince Tamino stumbles into the land of the evil Queen of the Night where he is rescued from a giant serpent by three ladies. They show him a picture of the Queen's daughter, the beautiful Pamina, with whom he immediately falls in love. Protected by a magic flute, he sets off with the bird-catcher Papageno to rescue Pamina from the clutches of the sorcerer Sarastro. But the sorcerer is actually a wise and kindly priest who tells Pamina she and Tamino are destined for each other but must prove their love through trials by fire and water.

Tickets £16 / £14 concessions



Tue 27 Nov – Sat 1 Dec 7.30pm  
 Sat 1 Dec 2.30pm  
 ROS presents

## Pride and Prejudice the Musical

*Book by Josie Brown  
 Music and Lyrics by Rita Abrams  
 at Winston Churchill Hall*

ROS is delighted to present the World Premiere of a musical inspired by the much-loved Jane Austen novel that celebrates Darcy and Elizabeth's journey from mistrust to matrimony.

For the five Bennet daughters, days of quiet domesticity are enlivened by pastimes guaranteed to throw them into the path of potential husbands - much to the delight of their garrulous mother. A local assembly sees the arrival in the neighbourhood of the wealthy and single Mr Bingley and of his aloof, handsome friend, Fitzwilliam Darcy.

Tickets £14 / £12 concs  
 Available after 15 Oct 2012 from  
 07905 932366



**Sat 1 December 11am, 2pm and 4pm**  
**Big Wooden Horse presents**

## The Night Before Christmas

On the night before Christmas Emily stares out of the window and waits excitedly for the morning. In the corner of the room, a little mouse called Eddie can't understand why only humans are allowed to celebrate and get presents. So he sets off in search of Father Christmas to find out for himself. Along the way he dodges the family cat, gets directions from a cowardly toy soldier and is given some unexpected advice from the magical fairy on top of the tree.

This is the return of the popular children's theatre company that created *The Adventures of Santa Claus* and *Don't Let the Pigeon Drive the Bus!* It's a perfect show for children aged 3 to 7 with plenty of audience participation and runs for 50 minutes without an interval.

**Tickets £7.50 / £6.50 Compass Club**



**Sat 1 December 3.30pm**  
**Outline Theatre and Hillingdon Arts Service presents**

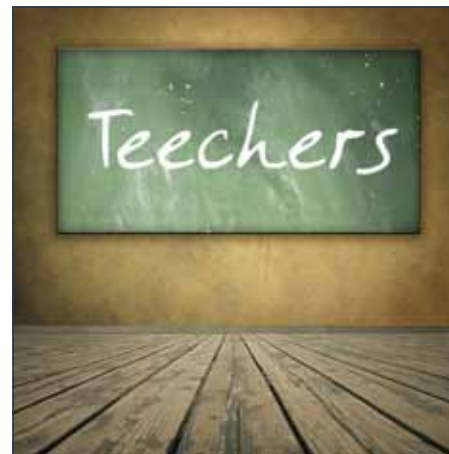
## The Nativity

*in the Great Barn*

Inspired by the Mystery Plays, Outline Theatre brings to life scenes from the Nativity against the stunning backdrop of the Great Barn, Ruislip.

In an hour long, promenade-style theatrical event for all the family, embracing the spirit of medieval street theatre and processional performance you can experience shepherds, kings, earthy humour and moving theatricality plus the chance to join in with your favourite carols. Outline Theatre work in partnership with Hillingdon Arts to bring you this feast of Christmas entertainment with festive refreshment provided.

**Tickets £5 / £4 concs**



**Fri 7 – Sat 8 December 7.30pm**  
**360 Youth Theatre presents**

## Teechers

*By John Godber*

The clang of the bell, sloppily-worn uniforms and the bellow of adolescent voices – all that's missing is the stench of school dinners. John Godber's play set at a crumbling secondary school sees an idealistic new drama teacher struggling with a lack of funding and fighting to direct the energy of his students, who are more intent on locking teachers in cupboards or sneaking a smoke. Teechers is a fast paced play-within-a-play and an energetic, funny drama.

Also...

**Thu 6 December 7.30pm**  
**360 youth theatre showcase featuring songs, sketches, photography and films.**

**Tickets**  
**Advance £5 / £3 concessions**  
**On the door all £7**



**Sun 9 December 4pm / 7pm**

## Compass Christmas!

The Compass Theatre's traditional Christmas concert returns with songs, readings, comedy and sketches.

Enjoy performances from our Compass community of local musicians and actors, from the very young to the most experienced.

With a free mince pie and a stockingful of good cheer, this is the perfect way to warm up for Christmas.

**Tickets £8 / £6.50 concessions**



Compass Theatre and proDuKtions


 A vibrant poster for the Cinderella pantomime. The background is a deep blue with a large, ornate compass rose in the upper left. A red horse-drawn carriage with a driver is on the left. A large, stylized red heart is in the center. The title 'Cinderella' is written in a large, flowing red script with a white outline. A trail of white stars and sparkles curves across the middle. At the bottom, a blue slipper with a gold tassel is shown.
 

# Cinderella

DK proDuKtions and Compass Theatre  
presents

## Cinderella

Christmas isn't the same without a trip to the pantomime.

Oh no it isn't!

And this Christmas, the wonderful tale of Cinderella is coming to Compass Theatre, in another great value, professional pantomime.

With fabulous dancing, singing, comedy and romance this year promises to bring all the traditional treats with a few fresh ideas to entertain the whole family.

Tickets are on sale now and with tickets costing as little as £8 each – and all other prices frozen from 2011, there's plenty of reason to join in the fun.

Thu	13 Dec	7pm	
Fri	14 Dec	4pm	7.30pm
Sat	15 Dec	1pm	5pm
Sun	16 Dec	1pm	5pm
Mon	17 Dec	10.30am	1pm
Tue	18 Dec	no show	
Wed	19 Dec	10.30am	1pm
Thu	20 Dec	10.30am	1pm
Fri	21 Dec	4pm	7.30pm
Sat	22 Dec	1pm	5pm
Sun	23 Dec	1pm	5pm
Mon	24 Dec	1pm	5pm
Tue	25 Dec	no show	
Wed	26 Dec	3pm	7pm
Thu	27 Dec	3pm	7pm
Fri	28 Dec	3pm	7pm
Sat	29 Dec	1pm	5pm

### Tickets

**Preview Shows All £8**

**School-time shows £13.50 / Children**

**£9.50 / School or OAP Groups of 10+ £8**

**Off-Peak Shows £13.50 / Children £9.50 /**

**Family of 4 £40\* / Groups of 10+ £10**

**Peak Shows £13.50 / Children £9.50**

**\* £40 Family Ticket = 2 adults plus 2 children or 1 adult plus 3 children**



## Compass Theatre

Providing great value, local entertainment in an arts hub for the London Borough of Hillingdon.

### Access



Accessible by wheelchair with 2 disabled spaces and 3 parking bays for disabled badge holders.

### Hillingdon Arts Service Box Office

Tickets can now be booked and paid for any time online at [www.compasstheatre.co.uk](http://www.compasstheatre.co.uk). For telephone / in person bookings the box office opens Mon-Fri 10.30am-5pm and Sat 10am-1pm. We make every effort to ensure that event details are correct but reserve the right to make changes or alterations as necessary.

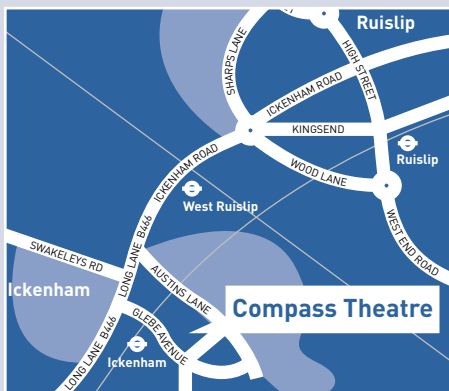
### Getting to Compass Theatre

By Train: Ickenham station (Metropolitan and Piccadilly) is opposite the theatre. West Ruislip Station (Central and Chiltern lines) is a 10 minute walk away.

By Bus: U1 and U10 bus routes.

By Car: Glebe Avenue is off Long Lane, 5 minutes from the A40, Hillingdon Circus exit.

Glebe Ave, Ickenham UB10 8PD  
01895 673200 / 632488  
[compasstheatre@hillingdongrid.org](mailto:compasstheatre@hillingdongrid.org)



## Manor Farm

An historical heritage site including the **Winston Churchill Hall** which hosts social events including monthly **Tea Dances**, the **Manor Farm Library** and an Interpretation Centre **Museum** in the **Manor Farm House** and the **Stables** which holds **Coffee Mornings** twice a month. **The Duck Pond Farmers / Artisan Food & Craft Markets** are on the site twice a month with over 100 stalls from contemporary crafts and vintage clothes to hand-crafted jewellery and organic foods and the **Cow Byre** café and gallery, exhibits pieces from regional artists and crafts people.

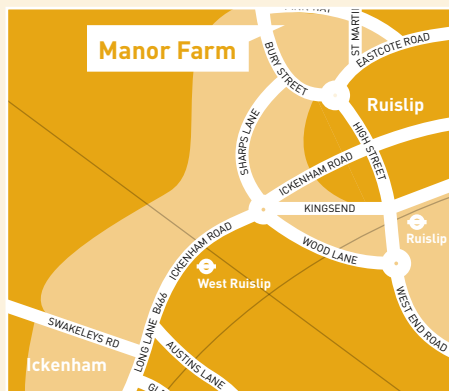
### Getting to Manor Farm

By Train: A 10 minute walk from Ruislip Station (Metropolitan and Piccadilly lines) and a 25 minute walk from West Ruislip Station (Central and Chiltern lines)

By Bus: H13 and 331 bus routes

By Car: 10 minutes from the Polish War Memorial exit of the A40, following the A4180 north to Ruislip.

Pinn Way, Ruislip HA4 7QL  
01895 678800  
[manorfarmsite@hillingdon.gov.uk](mailto:manorfarmsite@hillingdon.gov.uk)



## Hire a Space

Parties, Classes, Film Screenings, Ceremonies, Meetings, Training Sessions, Conferences, Performances and Ticketing facilities.

### Compass Theatre



#### Compass Auditorium / Cinema

Capacity 158 theatre-style with 2 wheelchair spaces  
300 standing, 80 cabaret-style



#### Compass Studio

Capacity 50



#### Compass Oak Room

Ground floor, oak panelled room with capacity for 20 people



#### Compass Long Room\*

Capacity 30-40, first floor room ideal for classes or meetings.

### Compass Theatre

Glebe Avenue, Ickenham UB10 8PD  
01895 632488 / 01895 673200  
[compasstheatre@hillingdongrid.org](mailto:compasstheatre@hillingdongrid.org)  
For hire rates and more details visit our website [www.compasstheatre.co.uk](http://www.compasstheatre.co.uk).

### Manor Farm



#### Winston Churchill Hall

Capacity 400 standing, 351 theatre-style with 4 wheelchair spaces, 200 cabaret style (150 with dance floor)



#### Stables\*

Capacity 40



#### Manor Farm House\*

Room and hall, capacity 20 each



#### The Great Barn

Perfect for weddings and ceremonies, capacity up to 200

### Manor Farm Site

Winston Churchill Hall  
Pinn Way, Ruislip HA4 7QL  
01895 678800  
[manorfarmsite@hillingdon.gov.uk](mailto:manorfarmsite@hillingdon.gov.uk)



September		
1	Compass Kidz	Compass Theatre
2	Big Fest	Uxbridge
2	Duck Pond Farmers Market	Manor Farm
7	Coffee Morning	Manor Farm
7-8	Stuck	Compass Theatre
11	Westside Story (PG)	Compass Theatre
12	Coffee Morning	Compass Theatre
13	The Hotel	Compass Theatre
15	Compass Kidz	Compass Theatre
15	Movie Mania	Compass Theatre
16	Duck Pond Artisan Market	Manor Farm
19	Theatre Design Course	Compass Theatre
20-22	Musical Meanderings	Compass Theatre
21	Coffee Morning	Manor Farm
26	Coffee Morning	Compass Theatre
26-29	Our House	Compass Theatre
October		
3-6	Calendar Girls (Argosy)	Compass Theatre
4	Band of the Blues and Royals	Manor Farm
5	Coffee Morning	Manor Farm
6	Compass Kidz	Compass Theatre
7	Duck Pond Farmers Market	Manor Farm
9	The Railway Children (U)	Compass Theatre
10	Coffee Morning	Compass Theatre
10-13	Calendar Girls (RDS)	Compass Theatre
14	Quiz and Chips	Compass Theatre
17-20	Fiddler on the Roof	Manor Farm
19	Coffee Morning	Manor Farm
20	Compass Kidz	Compass Theatre
21	Duck Pond Artisan Market	Manor Farm
24	Coffee Morning	Compass Theatre
24-27	Comic Potential	Compass Theatre
25	Tea Dance	Manor Farm
27	Treasure Island	Compass Theatre
29	The Princess Bride (PG)	Compass Theatre
31-3	Anna Christie	Compass Theatre

November		
1	Pirates and Princesses	Compass Theatre
2	Coffee Morning	Manor Farm
3	Rapunzel	Compass Theatre
3	Compass Kidz	Compass Theatre
4	Duck Pond Farmers Market	Manor Farm
7-10	Whistle Down The Wind	Compass Theatre
13	North by Northwest	Compass Theatre
14	Coffee Morning	Compass Theatre
14-17	The Drowsy Chaperone	Compass Theatre
15	Tea Dance	Manor Farm
16	Coffee Morning	Manor Farm
17	Compass Kidz	Compass Theatre
18	Duck Pond Artisan Market	Manor Farm
21-25	The Magic Flute	Compass Theatre
22	Band of HM Royal Marines, Portsmouth	Manor Farm
28	Coffee Morning	Compass Theatre
27-1	Pride and Prejudice the Musical	Manor Farm
30	Coffee Morning	Manor Farm
December		
1	Compass Kidz	Compass Theatre
1	The Nativity	Manor Farm
1	The Night Before Christmas	Compass Theatre
2	Duck Pond Farmers Market	Manor Farm
6	360 Showcase	Compass Theatre
7-8	Teachers	Compass Theatre
9	Compass Christmas	Compass Theatre
12	Coffee Morning	Compass Theatre
13	Central Band of the Royal Air Force	Manor Farm
13-29	Cinderella	Compass Theatre
14	Coffee Morning	Manor Farm
16	Duck Pond Artisan Market	Manor Farm
20	Tea Dance	Manor Farm