

Theatre

Drama

Music

Dance

Youth

Compass Theatre and Manor Farm

Jan – Apr 11



A great line up including
Henry V
Emily Smith
Roald Dahl Day
Jazz Supper Club
Slumdog Millionaire



HILLINGDON
LONDON

Box Office 01895 673200

Matinees £3 Evenings £5

Tue 11 Jan 2pm

Breakfast at Tiffany's

(PG)

Double Oscar-winning 1961 classic starring Audrey Hepburn.

Thu 3 Feb 7.30pm

In the Mood for Love (PG)

Celebrate Chinese New Year: the Guardian's fifth Most Romantic Film of All Time, with chow mein and chopsticks in the interval.

Thu 17 Feb 2pm

The Odd Couple (PG)

Neil Simon's 1968 comedy starring Jack Lemmon and Walter Matthau.

Tue 22 Feb 2pm

James and the Giant Peach (U)

1996 musical fantasy film based on the novel by Roald Dahl. See more Roald Dahl events on page 8.

Tue 8 Mar 2pm

Norman Wisdom in The Early Bird (U)

1965 British comedy film featuring the ubiquitous Mr Grimsdale.

BOLLYWOOD DOUBLE BILL:

See both for just £6

Thu 28 Apr 2pm

Sholay (PG)

The highest grossing film of all time in Indian cinema with English subtitles.

Thu 28 Apr 7.30pm

Slumdog Millionaire (15)

Danny Boyle's 8 Oscar-winning movie from 2008.

Tue 3 May 2pm

Singin' in the Rain (U)

1952 classic starring Gene Kelly and Debbie Reynolds.

Thu 17 Feb 7.30pm, Sat 30 Apr 2pm & 7.30pm

I ♥ FILM

If it's out on DVD and you can bring 16 or more people, we will let you choose the film. Send requests to compass theatre@hillingdongrid.org (subject to availability).





Fri 31 Dec 3pm & 4.30pm, Sat 1 Jan 3pm,
4.30pm & 6pm, Sun 2 Jan 1.30pm, 3pm
& 4.30pm

Adam Ingham presents

Christmas Circus

Adam Ingham's Christmas Circus is making a special visit to Compass Theatre with all the thrills and fun of the Big Top. Featuring award winning clowns, acrobats, aerial artistes and jugglers - all in the warmth of the theatre.

Tickets £6.50



Wed 19 - Sat 22 Jan 7.45pm

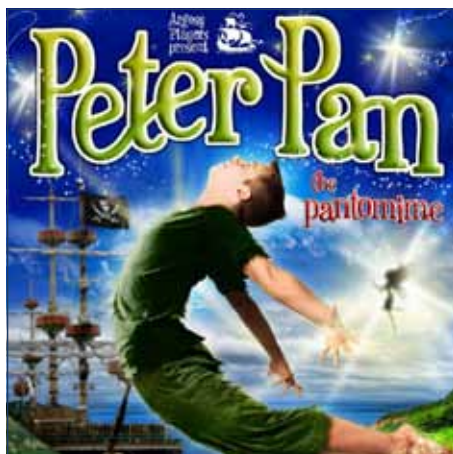
Proscenium presents

The Price

by Arthur Miller

A moving family drama written in 1968. Victor and his wife are taking a last look at the soon to be demolished house where he grew up. He is there to agree the price for the family possessions with a wily furniture dealer. Just as they are coming to an agreement, Victor's estranged brother Walter arrives. Having not seen his brother for 15 years, Walter tries an uneasy reconciliation and we understand the devastating effect of the Great Depression on this family and the price they've paid for their life choices.

Tickets £10



**Thu 20 & Fri 21 Jan 7.30pm, Sat 22 Jan
4pm & 7.30pm, Sun 23 Jan 12pm &
3.30pm**

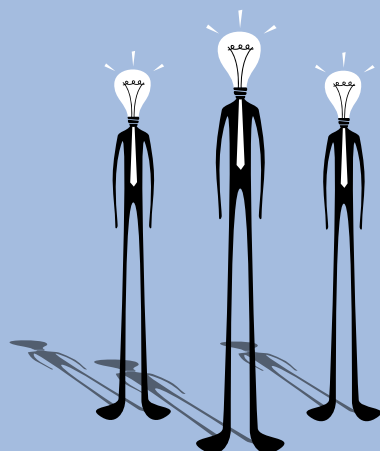
Argosy Players presents

Peter Pan

Take a trip to Neverland with Peter, Wendy, Tinkerbell and the lost boys in this magical panto for all the family. The classic tale becomes an amazing show filled with songs, sword fights and slapstick as Peter battles the ferocious Captain Hook and his army of pirates.

Following its long established custom of spectacular traditional pantomime, Argosy Players present another magical family adventure, featuring all your panto favourites and packed with laughter, songs and buckets of fun! Generous group rates available.

**Tickets £12/£9.50 concs
from 0845 8389058
www.argosyplayers.org.uk**



Tue 25 Jan 6.30-8pm

Hillingdon Arts Service presents

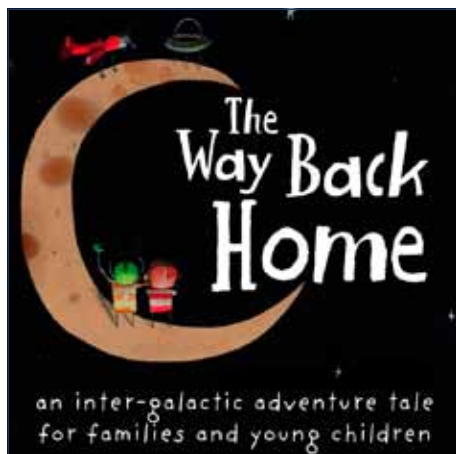
Artists Networking Evening (aNe)

Join us for our next Artist Networking Evening which will be chaired by Kris Holliday, Arts and Culture Manager for Hillingdon Council.

Arts across the UK are entering a challenging financial period. How has the spending review affected the Arts Council and how, in turn, will this affect local arts organisations? How will the arts stay relevant in face of the national cuts? How can we work together for the greater good? How best can we take advantage of the UK's mixed economy approach towards the arts? How can we assure that what we have created will be safeguarded?

Come and join us for an evening of debate, networking and refreshments.

Free Entry, RSVP via Box Office



Fri 28 Jan 1.30pm, Sat 29 Jan 11am

Big Wooden Horse presents

The Way Back Home

From the company that brought you *The Life & Adventures of Santa Claus* and *Don't Let The Pigeon Drive the Bus* comes this new production for young theatregoers. One day a boy finds a plane in his cupboard. He doesn't remember leaving it there, but he decides to take it out for a go right away! He flies his plane higher and higher until he runs out of petrol and lands on the moon. He is frightened, lost and alone until a passing Martian lands there too. Who is the strange alien? Can they really be friends? And how will they find their Way Back Home?

Tickets £6.50 / Groups of 10+ £3 on Fri



Thu 3 Feb 7.30pm

The RAF Central Band in Concert

The Central Band of the RAF returns to perform in aid of the Royal Air Forces Association. Following a busy year commemorating the 70th anniversary of the Battle of Britain, including TV and radio appearances, a national tour and the release of a new album, *Reach for the Skies*, the Central Band return in support of the RAF Associations Wings appeal. The appeal is dedicated to supporting serving and former RAF personnel and their families. Whether for an injured airman fighting to get back onto his feet, a young daughter missing her parent away on overseas operations or a WWII veteran needing a shoulder to lean on, the RAF Association is there to help.

Tickets £15



Mon 14 Feb at 7.30pm

Uxbridge Folk Club presents

Emily Smith

Scots Singer of the Year 2008/9, Emily Smith has firmly established herself as a leading light in the Scottish folk scene.

Since winning the 2002 BBC Young Traditional Musician of the Year Award she has released three critically acclaimed albums, toured extensively on the international folk circuit and is recognised not only as one of Scotland's finest interpreters of traditional song but also as a talented songwriter and multi-instrumentalist.

'As far as I'm concerned she can walk on water'

Mike Harding, Radio 2

'Smith deserves to become yet another new folk celebrity'

The Guardian

Tickets £12



Fri 18 Feb 8pm

Compass Theatre presents

Band Night

Launchpad kick-starts its rocking 2011 programme with another night showcasing the best up and coming bands in the area, complete with stunning lighting effects!

Featuring

9th Era

Ayres

Full line up to be announced - join the Launchpad Hillingdon facebook group to find out more.

A must in the diary of any music lover...

Tickets £5



Sat 19 Feb 7.30pm

Compass Theatre presents

Jazz Supper Club

The perfect gift for your Valentine!

Back by popular demand after the success of last year's Jazz Cafe, comes the Compass Jazz Supper Club.

Leave the entertainment and the meal to us as we transform the Compass auditorium into cabaret style for our Jazz Supper Club, with mellow sounds provided by Terry Drummond's 10-piece Jazz Orchestra.

Tickets £19.50 including supper



Sun 20 Feb 7.30pm

The Maverick Theatre Company presents

Henry V, Lion of England

Arguably one of Shakespeare's finest history plays, this one-person adaptation features historical accuracy with much of Shakespeare's original text. A modern day Chorus takes us back to the dark dangerous days of 1415, when an insulting gift of tennis balls from the headstrong Prince Dauphin of France provokes King Harry of England. These two young men eventually meet in a bloody war that climaxes with the Battle of Agincourt. The subjects of provocation, invasion and who holds the moral rights to a just war are as relevant today as they were in 1415. This spirited production combines an innovative recipe of one actor and a supporting cast of lights, sound, special effects and an evocative and original live music score. The result is 60 minutes' edge-of-the-seat excitement.

'A towering, quicksilver show... quite brilliant'
Stratford-upon-Avon Herald

Tickets £14/£12 concs

Mon 21 Feb 1pm at Compass Theatre
Barking Dog Theatre Company presents

Alice in Wonderland

Come and follow the adventures of Alice. Original music, audience participation, puppetry and mime. Ideal for children ages 4-9.

Tickets £6.50



The Roald Dahl Museum and Story Centre

81-83 High Street, Great Missenden, Bucks, HP16 0AL Tel: 01494 892193

The Roald Dahl Museum and Story Centre is a great little award-winning museum aimed at 6-12 year olds and their families. Situated in the village where Roald Dahl lived and wrote for 36 years, the museum was created as a home for the author's unique archive. There are two fun and fact-packed biographical galleries and a fantabulous interactive Story Centre that inspires creativity.



Tue 22 Feb 2pm
Compass Cinema

James and the Giant Peach (U)

1996 musical fantasy film produced by Tim Burton and based on the novel by Roald Dahl.

Tickets £3

Fri 25 Feb at Compass Theatre

Roald Dahl Day

Experience a fizzing, whizzing day of puppet-making, storytelling and drama activities, led by staff from the Roald Dahl Museum and Story Centre and Compass Theatre, ideal for children aged 5-11.

10am & 1.30pm

Roald Dahl Song and Dance Activities

Help to write, then learn and perform a Roald Dahl-inspired song and dance routine.

10.30am

Roald Dahl Storytelling and Beastly Proghopping Puppets

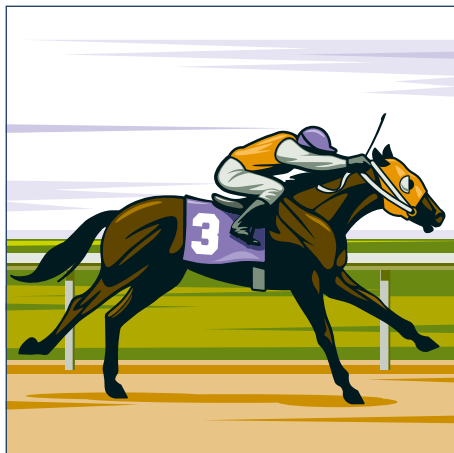
Listen to stories from Roald Dahl's Revolting Rhymes and Dirty Beasts to inspire your own table-top puppet complete with fangs, horns and even claws.

1.30pm

Roald Dahl Storytelling and Crockadowndilly Glove Puppets

Learn more about the infamous Enormous Crocodile, then design and make your own crockadowndilly glove puppet to take home and keep.

£4 per workshop or 2 for £7



Thu 24 - Fri 25 Feb 7.30pm

Hillingdon Arts Service presents

A Night at the Races

It's the day of the Derby and racehorse Alsoran's maiden race. His owners have a lot riding on the race today, and he's up against some of the fastest horses and most experienced riders in the business... Have a flutter on Alsoran's chances, dress up and enjoy the excitement of the grandstand, where fortunes are made and lost in a day of fast hooves and unwise gambles!

Following on from last year's interactive wedding show *For Better or For Worse*, this is a showcase of great local writing performed by a professional cast.

Proceeds will be donated to Happy Ever After, a charity sponsoring literacy programmes in Ghana.

Tickets £6



Sat 26 Feb 3pm

Hillingdon Arts Service presents

Hillingdon's Hidden Talent

Have you got what it takes to be a star?

It's back! Now in its third year, the popular showcase of local talent returns with another packed programme of the old, the new, the traditional, the daring...from ventriloquists to rock bands to spoon players and street dancers, if you've got a talent, we want to hear from you!

There are three categories for the competition: application forms are available to download from our website and in all libraries. Alternatively please contact the Compass Theatre for more info. There will be prizes for the top 3 winning entries!

Entry forms can be downloaded from www.compasstheatre.co.uk

Free to compete
Tickets £3 to watch



Thu 3 - Sat 5 Mar 7pm
The Art of Life UK presents

Swan Lake

Art of Life UK presents ASIA and Reddiford Studio School in a unique east meets west adaptation of Swan Lake, an enchanting tale of love portrayed through a scintillating blend of ballet and classical Indian dance. www.artoflifeuk.org

Tickets £7
 Tickets from
 020 3137 0948
 07956 387386
 07957 480616 (Eve & Wkds only)
www.artoflifeuk.org



Thu 10 - Sat 12 Mar 7.45pm
Conway Clark productions
and Compass Theatre presents

The Farndale Avenue Housing Estate Townswomen's Guild Dramatic Society Murder Mystery Murder at Checkmate Manor

After a sell out run at Henley Fringe comes this hilarious farce. This ambiguous and cunning Agatha Christie-style 1930s drawing room murder mystery requires the redoubtable ladies of society to play all 14 roles (aided by their stage manager, Gordon) with hysterical results. If it can go wrong it probably will..... but surely it will be all right on the night??

Tickets £11/£9 concs



Wed 16 - Sat 19 Mar 7.45pm

Proscenium presents

Three Plays

by Wolf Mankowitz

The Hebrew Lesson

It Should Happen to a Dog

The Bespoke Overcoat

by the author of

A Kid for Two Farthings

Wolf Mankowitz wrote many plays based on his Jewish heritage, some of which he described as being a typically over-long Jewish joke.

His plays are witty and wistful; full of human desires and inadequacies.

They make you laugh, but mostly they make you smile, often a little wryly.

Tickets £10



Fri 25 - Sat 26 Mar 7.30pm

360 Youth Theatre presents

California Suite

by Neil Simon

Inside a luxurious California hotel we see four comedic stories unfold: the couple in from New York argue over the custody of their daughter, a woman and her friend from Britain are excited about her being nominated for an Academy Award, two couples from Chicago discover that they cannot stop competing and arguing with each other and finally in the last scene a man from Philadelphia tries to hide his prostitute while his wife has arrived at his hotel door for a surprise visit. A comedy that is witty and fun from award winning playwright Neil Simon.

ALSO Thu 24 March 7.30pm

360 Youth Theatre Showcase, featuring films, sketches, songs.

Tickets £5/£3 concs



Wed 30 Mar 8pm

Compass Players presents

Impro Show!

The Compass Players are a group of improvisers who practice their skill in weekly classes at the Compass Theatre. In this fully improvised show the actors will be asking you the audiences for suggestions to start scenes.

Come prepared for a hilarious evening's worth of entertainment where you will see never performed before characters and sketches.

The Compass Players will perform both short and long form improvisation and will use classic games such as *Freeze Tag* to find new scenes.

The Compass Players practise their skills every Wednesday at 8pm and are looking for new members.

For more details contact Adam Goldstein
agoldstein@hillingdongrid.org

Tickets £4



Wed 30 Mar – Sat 2 Apr 7.30pm

Harrow Opera presents

The Marriage of Figaro

Harrow Opera proudly present a fully staged version of Mozart's timeless comedy *The Marriage of Figaro*, in English.

Set in the roaring twenties, Figaro, Valet to the Count Almaviva is about to be married to his beloved Susanna, the Countess Rosina's maid. However the Count has designs on Susanna himself and Figaro is bound to marry Marcellina, the Countess's former governess, unless he repays the money he owes her...

www.harrowopera.co.uk

Tickets £15 /£12 concs



Wed 6 - Sat 9 Apr 7.45pm
& Sat 9 Apr 2.30pm

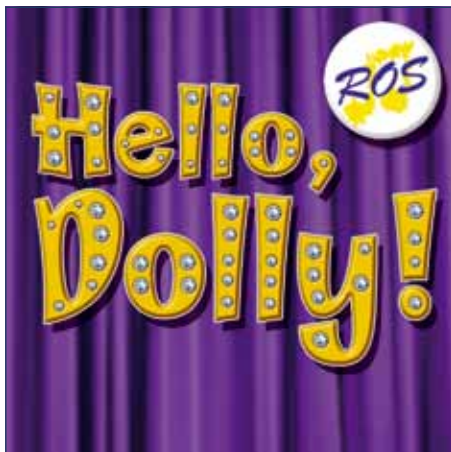
Pastiche Musical Theatre presents

Kiss Me Kate

Cole Porter's Tony-award winning musical, set in Baltimore in 1948. This perfect marriage of Shakespeare's Taming of the Shrew with Cole Porter's witty, sophisticated lyrics and unforgettable melodies is considered one of the greatest musicals ever produced, and probably Porter's finest.

Songs include *Another Op'nin Another Show*, *Too Darn Hot*, *So in Love*, *Brush up your Shakespeare*, *We Open in Venice* and *I Hate Men*.

Tickets £12/£10 concs



Tue 12 - Sat 16 Apr 7.30pm & Sat 16 Apr 2.30pm

ROS presents

Hello Dolly!

Dolly Levi, professional matchmaker and inveterate meddler, sets out to capture the heart and wallet of the well-known Yonkers half-a-millionaire, Horace Vandergelder. Along the way she organises several couples up the aisle and makes a long overdue return to the Harmonia Gardens, New York's finest restaurant, radiating warmth and mischief. This sparkling musical comedy features the show-stopping hits *Put On Your Sunday Clothes*, *Elegance* and *Hello Dolly!*

Tickets £14
Concs £12 (Tue, Wed & Sat matinee only)
Booking opens from 28/02/11
Via tel 07905 932 366



Tue 26 - Wed 27 April 7.30pm

Angus & Ross Theatre Company presents

Frankenstein Live

by Tom Needham

Is a monster born or made? Where does our responsibility lie? Based on the classic horror story by Mary Shelley, this gripping new adaptation explores the extraordinary attachment between Dr Frankenstein and his creation – an attachment, they both grow to realise, that only death can break. Produced in partnership with The Georgian Theatre Royal, Richmond. Written specially for this increasingly successful company by Tom Needham, whose TV credits include Cold Blood, Silent Witness, Dalziel & Pascoe and over 60 episodes of The Bill; and whose plays include The Wreckers and Won't Be Long. David (Dominic) Goodwin who in his young days performed with Argosy Players, Theatre 7, The Compass Company, and Aquarius Theatre Company is very excited at the opportunity of playing at home!

Tickets £10



Sun 1 May 3pm

Compass Theatre presents

Reading of Terry Pratchett's Mort The Musical

Death comes to us all. When he came to Mort, he offered him a job. Now the poor boy is apprenticed to an anthropomorphic personification who is having a mid-existence crisis.

And he's fallen in love with a princess who should be dead. Also, he's created an alternative reality that might end the universe. Still, it could be worse. At least he's not facing a life or Death situa... oh dear.

Join us for a fun, informal reading of this stage adaptation with a professional cast of actors and a very large skeleton, prior to the Youth Music Theatre: UK production in 2011.

Tickets £2.50

Hire Our Space

Parties, Ceremonies, Performances, Conferences or Classes

Theatre Auditorium

158 seated (raked) / 300 standing / 80 cabaret.

Studio

Fully equipped suitable for classes or rehearsal space

Oak Room

Ground floor room for 18-20 people

Long Room

First floor room for 25-30 people

Contact 01895 632488 or email compassstheatre@hillingdongrig.org

Hire Our Costumes

Wardrobe open Wednesdays 8pm-10pm term time. Contact Jilly 01895 237256



Play a part in your local theatre

I volunteer at Compass Theatre because it's fun, friendly and social place to work. I also want to learn a variety of new skills in a creative environment. **Mariko**



We need more volunteers to help with:

**Ushering
Band Nights
Wine Bars
Wardrobe**

There are also a range of opportunities available at Manor Farm in Ruislip. So whether you are interested in theatre, heritage or just passionate about people, to find out more please contact Julia Reason on 01895 632488 or e-mail jreason1@hillingdongrig.org

Compass Theatre Gallery

Work from local artists are exhibited in our Bistro and sold through the box office. To exhibit your work, contact cbaldwin4@hillingdongrig.org

360 Youth Theatre

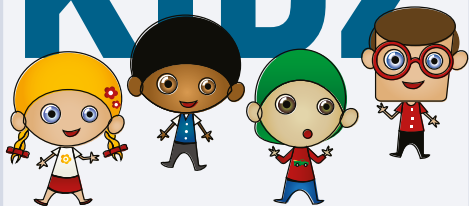
Drama / Videoworx /
Vocalworx / Photoworx

Part of the London Borough of Hillingdon's Youth Service, 360 staff are all qualified youth workers and have years of experience and expertise in their fields. Call 01895 465572 for more information

The Compass Players: Adult Improvisation Comedy Classes

The Compass Players practise their skills every Wednesday evening at 8pm and are always looking for more improvisers. Classes cost £40 per term. Contact Adam Goldstein for more details adgoldstein@hillingdongrid.org

COMPASS KIDZ



Compass Kidz

Monthly classes: drama games, acting, movement, dance, puppetry etc for children aged 4 to 7. Sessions at 10am and 11am on the first Saturday of every month during term time. Book places through the Box Office on 01895 673200

Hillingdon Music Service

The Hillingdon Music Service are based at Compass Theatre. Visit their website for full details. www.hillingdonmusic.org.uk

Singing4Fun

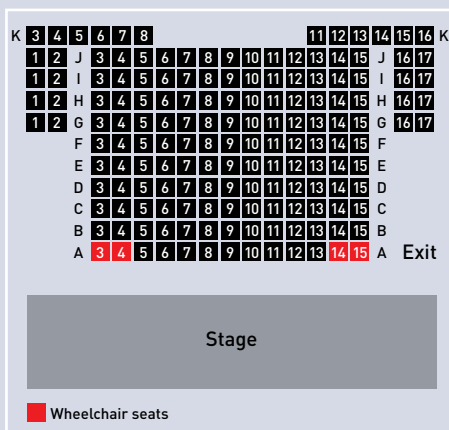
Singing club for adults. The first session is free! They meet during term times on Thursdays in the Compass Theatre Long Room from 7.45pm – 9.45pm. For more information visit <http://singing4fun.com> or email info@singing4fun.com or call 07843 253 302

Stars at Knight

Drama club for children aged 7-11 years, includes improvisation, drama, fun games, stage falls, action, challenge, speech, shows and Trinity Hall Exams. Sessions on Saturdays at Compass Theatre 10.30am to 11.30am. For more information call Judy on 020 8841 8940 / 07956 123626 or email starsatknight@btinternet.com

WEA (Workers' Education Association)

Ruislip and Uxbridge Branch holds all classes at the Compass Theatre, offering a range of classes. The WEA is committed to promoting equality and diversity. All are welcome. For more information or to enrol visit their website www.london.wea.org.uk



Booking

Unless otherwise stated, tickets can be purchased from Compass Theatre Box Office 01895 673200 or at www.compass theatre.co.uk

Box Office opens 10.30am-5pm Mon to Fri, 10am-1pm Saturdays and from 45 minutes before a show. Tickets can be paid for with debit or credit card, cash or cheques made payable to London Borough of Hillingdon. Unpaid reservations can be held for 5 working days or until 24 hours before the performance, whichever is sooner. Unpaid reservations will not be held for payment on the door. Purchased tickets will not be refunded unless a performance is cancelled. We make every effort to ensure that the details included here are correct but reserve the right to make changes or alterations as necessary.

Photography, Video Recording and Mobile Phones

The use of cameras and any kind of recording apparatus is not permitted in the auditorium and we ask that patrons turn off their mobile phones.



Photography is not permitted without prior permission

Refreshments

The Cafe and Wine bars are usually open 45 minutes before a show and again during intervals.

Access



The Compass Theatre is accessible by wheelchair and has 2 dedicated wheelchair spaces in the auditorium, disabled badge holder car parking facilities, accessible toilet facilities, accompanying personal assistant tickets are free and assistance dogs welcome. The auditorium and Box Office are fitted with induction loops and baby changing facilities are available.

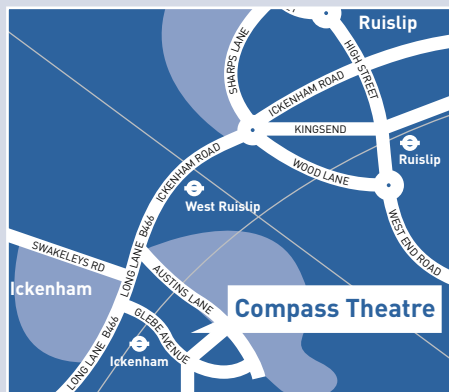
Babies under 18 months may be admitted to appropriate events with a Lap Ticket, issued by the Box Office.

Getting Here

By Train: Opposite the theatre is Ickenham station on the Metropolitan and Piccadilly Lines. West Ruislip (Central Line & Chiltern Line) is just a short walk away.

By Bus: Ickenham is served by the U1 and U10 bus routes.

By Car: Compass Theatre is on Glebe Avenue, just 150 yards from Long Lane. Limited free parking on site plus large pay and display car park opposite at Ickenham Station.



1-4pm: 6 Jan, 17 Feb, 24 Mar, 21 April

Tea Dances

Music and dancing for all ages...
Once a month at the Winston Churchill Hall we run a Tea Dance for confirmed dancers and beginners alike with hosts Terry and Rita from Terry's Dance Music playing a wide selection of Ballroom, popular sequence dance and Latin Music. Seating is available in the hall and the Tea Dance is also a social occasion so feel free to come along with friends to dance or to enjoy the atmosphere...



Tickets £3 per person and includes a free tea or coffee

Duck Pond Markets

A great West London meeting place for families with a festival feel and over 100 stalls selling everything from contemporary crafts, vintage clothes, hand-crafted jewellery and organic foods. Keep the little ones occupied too with vintage swing boats, petting zoo, face painting and fun make and takes. Free parking and links from 3 tube lines make it easy to get to, and free to get in!

Duck Pond Christmas Markets

10am-3pm: Dec 5, 11, 12, 22

Duck Pond Markets

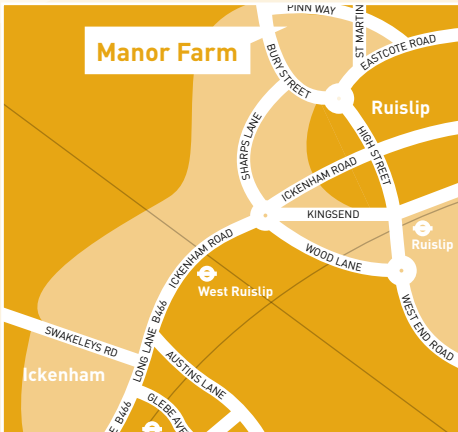
10am-3pm: Sun 16 Jan, 20 Feb, 20 Mar, 17 Apr

Duck Pond Farmers Market

10am-3pm: Sun 6 Feb, 6 Mar, 10 Apr

NEW Weekly Farmers Market

10am-2pm: Every Wednesday



Manor Farm Site Team

Winston Churchill Hall, Pinn Way,
Ruislip HA4 7QL

Tel: 01895 678800

E-Mail: Manorfarmsite@hillingdon.gov.uk

Also

Coffee Mornings at Manor Farm House

Alternate Fridays 10.30am -11.30am.

Coffee or tea and talks on a variety of topics. 21 Jan, 4 Feb, 18 Feb, 1 April, 15 April, 29 April.

Amanda's Action Kids

Every Friday 10am: fun, fitness & music classes for babies and pre-schoolers.

Hillingdon Decorative Fine Arts Society

12 Jan, 9 Feb, 9 Mar at 2pm

Moor Park Decorative Fine Arts Society

19 Jan, 16 Feb, 16 Mar, 20 Apr at 11am

West Middlesex National Trust

10 Jan & 15 Feb 2pm, 16 Mar 7.45pm, 7 Apr 8pm

For information contact 01895 678800 / manorfarmsite@hillingdon.gov.uk

Heritage at Manor Farm

Manor Farm has a rich historical past, brought to life through activities and resources on site.

The landscape alone holds over a thousand years of history illustrated by information panels across the site making Manor Farm an ideal place to visit close to Ruislip Wood nature reserve.

The range of things to see and do on the site now includes:

The Manor Farm House Museum

The refurbished Manor Farm House houses an interactive display illustrating the history of the site and features a range of artefacts and finds uncovered during the site refurbishment.

Winter-Spring opening Hours

Mon-Fri 12pm-3pm

Sat-Sun 12pm-4pm

Market Sundays 11am-4pm

Admission free. Manor Farm House closed from 23 Dec 2010, re-opens 10 Jan 2011

The Great Barn

Built between 1280 and 1300 from trees cut down less than a mile away in Ruislip Woods, the Great Barn is the oldest timber framed building of its type in the country. Extensively restored, the barn is now a valuable educational resource. Open through the Education Programme and by request.

Fully Licensed for Civil Ceremonies and Partnerships, the Great Barn is also one of the most exclusive and authentic Wedding Venues available for private hire.

Education and Enrichment

A programme of seasonal events for families, and educational groups are provided throughout the year. School visit and outreach programme offers a range of activities in the following topics: Saxons, Heraldry, Medieval Manor, Victorians and Traditional Crafts. Contact Fabiola Knowles Education Programme Manager 01895 634414 fknowles@hillingdon.gov.uk

Manor Farm Library

The recently refurbished Manor Farm library is housed in a converted 16th Century barn adjacent to Bury Street. Contact the Library on 01895 558234 or email manorfarm-library@hillingdon.gov.uk Open Mon-Thu 9am-8pm, Fri 9am-5.30pm and Sat 9am-5pm.

How to find Manor Farm

Manor Farm is located at the top end of Ruislip High St in North West London. The main pedestrian entrances are via the High St and from Pay and Display car park, off St Martins Approach.

Winston Churchill Hall can be reached on foot as above, or by car via Pinn Way. Ruislip Underground (Metropolitan & Piccadilly) 10 min walk, West Ruislip (Central Line & British Rail) 25 minute walk. Served by H13 & 331 bus routes. By Car the site is 10 min from A40, exit Polish War Memorial, follow A4180 north to Ruislip.

For more details about Manor Farm or Winston Churchill Hall contact the Manor Farm site team.

January

Fri 31 - Sun 2	Christmas Circus	Compass Theatre	CIRCUS
Thu 6	Tea Dance	Manor Farm	DANCE
Mon 10	West Middlesex National Trust	Manor Farm	TALK
Tue 11	Breakfast at Tiffany's (PG)	Compass Theatre	FILM
Wed 12	Hillingdon Decorative Fine Arts	Manor Farm	TALK
Sun 16	Duck Pond Market	Manor Farm	MARKET
Wed 19	Moor Park Decorative Fine Arts	Manor Farm	TALK
Wed 19 - Sat 22	The Price by Arthur Miller	Compass Theatre	DRAMA
Thu 20 - Sun 23	Peter Pan	Manor Farm	FAMILY
Tue 25	Artist Networking Evening (aNe)	Compass Theatre	TALK
Fri 28 - 29	The Way Back Home	Compass Theatre	FAMILY
February			
Thu 3	The RAF Central Band	Manor Farm	MUSIC
Thu 3	In the Mood for Love (PG)	Compass Theatre	FILM
Sun 6	Duckpond Farmers Market	Manor Farm	MARKET
Wed 9	Hillingdon Decorative Fine Arts	Manor Farm	TALK
Mon 14	Emily Smith	Compass Theatre	MUSIC
Tue 15	West Middlesex National Trust	Manor Farm	TALK
Wed 16	Moor Park Decorative Fine Arts	Manor Farm	TALK
Thu 17	Tea Dance	Manor Farm	DANCE
Thu 17	The Odd Couple (PG)	Compass Theatre	FILM
Thu 17	I ♥ FILM	Compass Theatre	FILM
Fri 18	Band Night	Compass Theatre	MUSIC
Sat 19	Jazz Supper Club	Compass Theatre	CABARET
Sun 20	Duck Pond Market	Manor Farm	MARKET
Sun 20	Henry V, Lion of England	Compass Theatre	DRAMA
Mon 21	Alice in Wonderland	Compass Theatre	DRAMA
Tue 22	James & The Giant Peach (U)	Compass Theatre	FILM
Thu 24 - Fri 25	A Night at the Races	Compass Theatre	DRAMA
Fri 25	Roald Dahl Day	Compass Theatre	W/SHOP
Sat 26	Hillingdon's Hidden Talent	Compass Theatre	VARIETY

March

Thu 3 - Sat 5	Swan Lake	Compass Theatre	DANCE
Sun 6	Duck Pond Farmers Market	Manor Farm	MARKET
Tue 8	The Early Bird (U)	Compass Theatre	FILM
Wed 9	Hillingdon Decorative Fine Arts	Manor Farm	TALK
Thu 10 - Sat 12	Murder at Checkmate Manor	Compass Theatre	DRAMA
Wed 16	Moor Park Decorative Fine Arts	Manor Farm	TALK
Wed 16	West Middlesex National Trust	Manor Farm	TALK
Wed 16 - Sat 19	Three Plays by Wolf Mankowitz	Compass Theatre	DRAMA
Sun 20	Duck Pond Market	Manor Farm	MARKET
Thu 24	Tea Dance	Manor Farm	MARKET
Thu 24	360 Youth Theatre Showcase	Compass Theatre	VARIETY
Fri 25 - Sat 26	California Suite by Neil Simon	Compass Theatre	DRAMA
Wed 30	Impro Show	Compass Theatre	COMEDY
April			
Wed 30 - Sat 2	The Marriage of Figaro	Compass Theatre	OPERA
Wed 6 - Sat 9	Kiss Me Kate	Compass Theatre	MUSICAL
Thu 7	West Middlesex National Trust	Manor Farm	TALK
Sun 10	Duck Pond Farmers Market	Manor Farm	MARKET
Tue 12 - Sat 16	Hello Dolly!	Manor Farm	MUSICAL
Sun 17	Duck Pond Market	Manor Farm	MARKET
Wed 20	Moor Park Decorative Fine Arts	Manor Farm	TALK
Thu 21	Tea Dance	Manor Farm	DANCE
Sat 24 - Sun 25	St George's Day Celebrations	Manor Farm	FESTIVAL
Tue 26 - Wed 27	Frankenstein Live	Compass Theatre	DRAMA
Thu 28	Sholay (PG)	Compass Theatre	FILM
Thu 28	Slumdog Millionaire (15)	Compass Theatre	FILM
Sat 30	I ♥ FILM	Compass Theatre	FILM
May			
Sun 1	Mort the Musical	Compass Theatre	DRAMA
Tue 3	Singin' in the Rain (U)	Compass Theatre	FILM

At a glance